

Figure S1. Changes in parameters between the time of EGPA diagnosis and pre-treatment with biologic agents. CRP: C-reactive protein; * $P < 0.05$ and ** $P < 0.01$ as measured by the Wilcoxon signed rank test

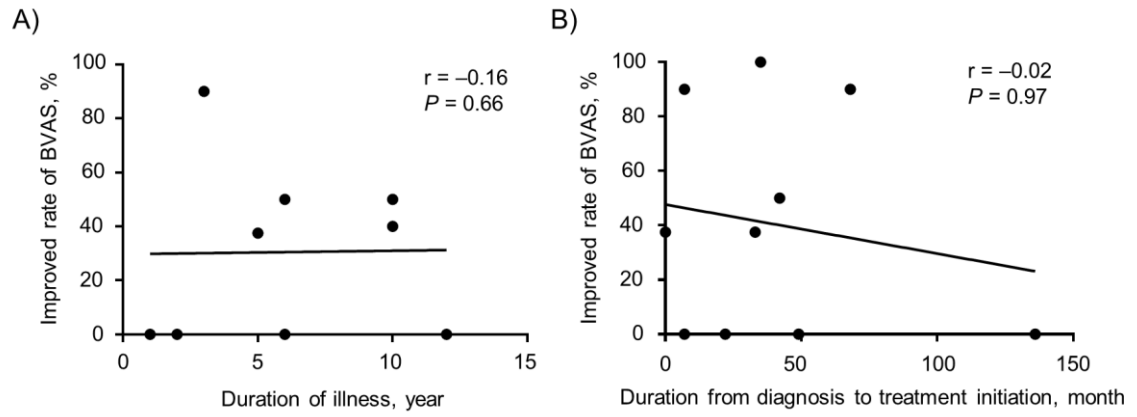


Figure S2. Correlation of an improved rate of BVAS with the duration of illness and the time to biologic initiation. (A) The duration of illness; (B) the duration from diagnosis to biologic initiation. BVAS: Birmingham Vasculitis Activity Score