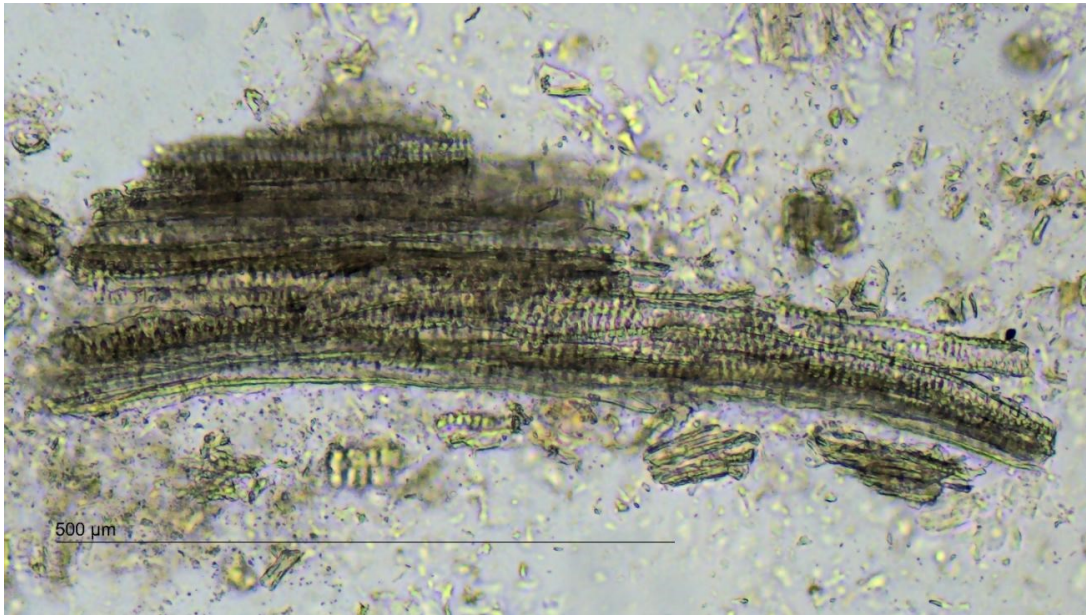
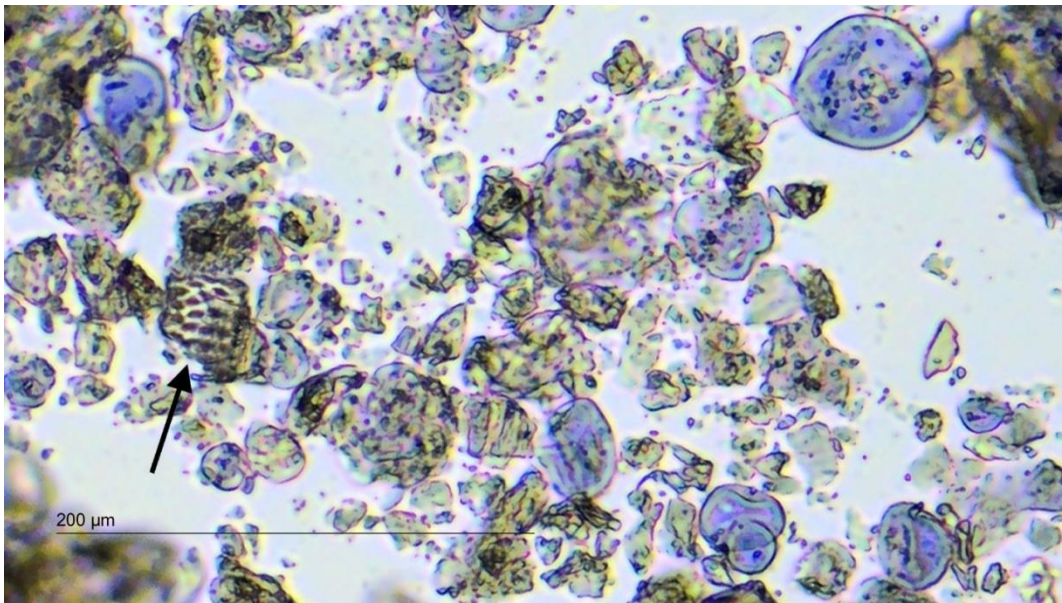


## Supplementary Data



**Figure S1.** Microscopy of xylem parts identified in a dietary supplement labeled as Ashwagandha root extract. Transmitted light microscopy magnified 50×, sample H.



**Figure S2.** Microscopy of a dietary supplement labeled as Ashwagandha root extract. Transmitted light microscopy of a small xylem part (arrow) and of deformed gelatinized starch grains stained with diluted Lugol's solution, magnified 100×, sample E.